

# OSRAM at the forefront

As you are undoubtedly aware, the EU Ballast Directive will prohibit, from May 2002, the use of inefficient conventional control gear (CCG) rated in Energy Efficiency Class D. And from November 2005, Energy Efficiency Class C ballasts will also be banned, leaving only 'low-loss' ballast (Class B) and ECG (Class A) for legal sale in the EU.

It's all part of the EU's campaign to improve energy efficiency and reduce greenhouse gas emissions. With some CCGs consuming close to half a lamp's wattage, it's not surprising that the EU has backed the lighting industry's drive towards higher energy efficient lighting systems.

OSRAM has been at the forefront of electronic control gear development. These ECGs offer typical energy savings of over 30%, as well as extended lamp life and provide smooth flicker-free light with safe shut down at end of lamp life.

## Ahead of the game with OSRAM's QUICKTRONIC® ECO

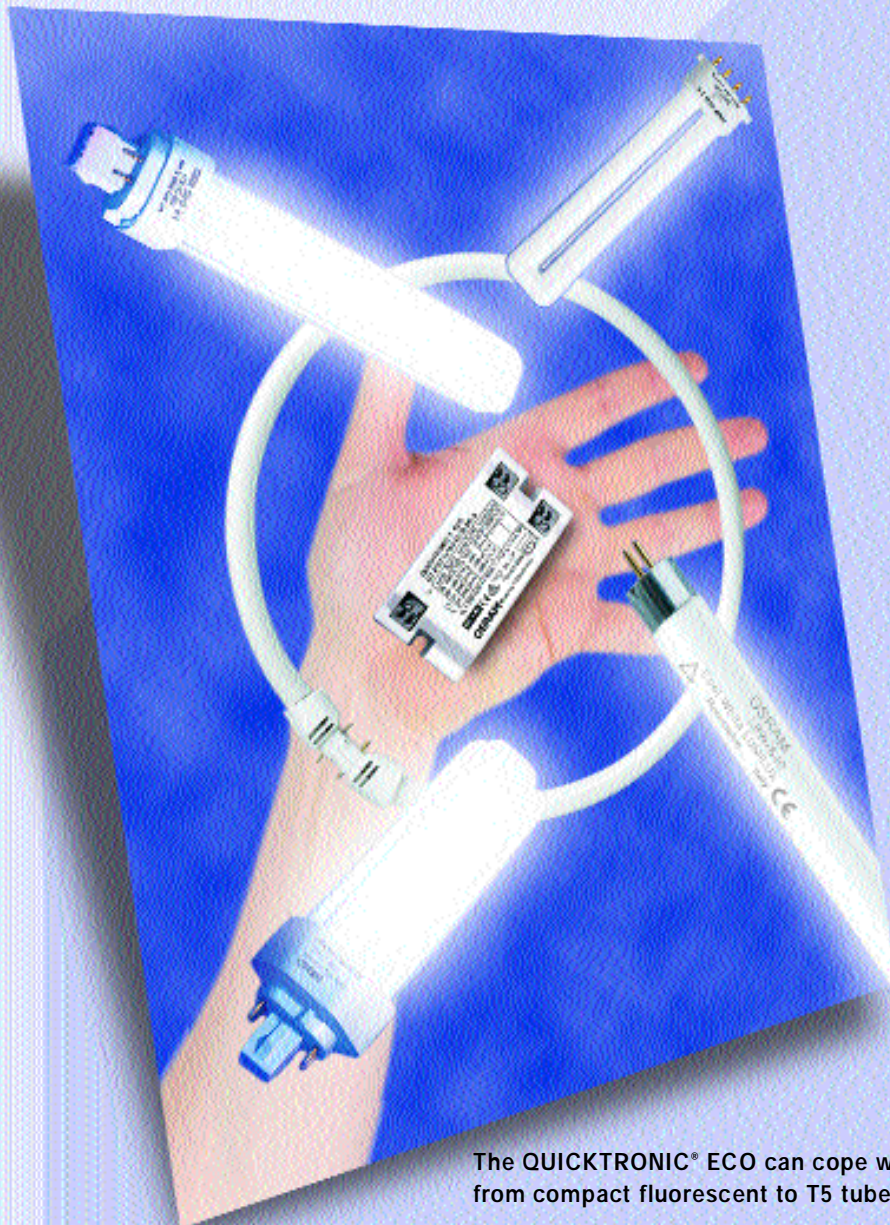
OSRAM's new QUICKTRONIC® ECO electronic ballast is a very compact, low cost, MULTIWATT ECG for operating a range of lower wattage fluorescent lamps. Available in two versions, 4-16W and 18-24W and only 80mm x 40mm x 22mm, it can be a simple retrofit for conventional control gear in existing fittings.

Being EU Energy Efficiency Class A2, by switching to QUICKTRONIC® ECO, your customers will reap the benefits of electronic control gear such as 30% energy savings over conventional control gear, longer lamp life, silent operation and a smooth, flicker-free light.

OSRAM QUICKTRONIC® ECO not only incorporates preheat start, an essential requirement for long lamp life especially when frequently switched, but has safe shut down at end-of-life lamps with automatic restart on relamping. Between them, the two QUICKTRONIC® ECO ECGs can operate a total of 26 different lamps in wattages from 4W to 24W, either compact, linear (T5 and T8) or circular.

**OSRAM has been at the forefront of electronic alternatives to ECGs.**

**OSRAM's ECGs offer typical energy savings of over 30% over CCGs, as well as extended lamp life due to lower power consumption and preheat starting.**



The QUICKTRONIC® ECO can cope with a huge range of lamp types, from compact fluorescent to T5 tubes including circular tubes